



**CENTRAL DISTRICT BREWING**

**417 Red River Street  
Austin, TX 78701**





# CENTRAL DISTRICT BREWING

---

Central District Brewing provides a fresh, fun, and unique atmosphere for private parties and corporate events. We are located in the heart of downtown, adjacent to the convention center, and blocks away from Austin's busiest districts. Our design incorporates post-industrial modern elements, with copper accents and soft greenery. The perfect place for your next event!





# VENUE SPACES AVAILABLE



## FULL TAPROOM

1283 Sq. Ft.  
100 reception, 75 seated,  
40 classroom

## SEMI-PRIVATE ROOM

237 Sq. Ft. (sliding doors close)  
16 seated, 20 reception

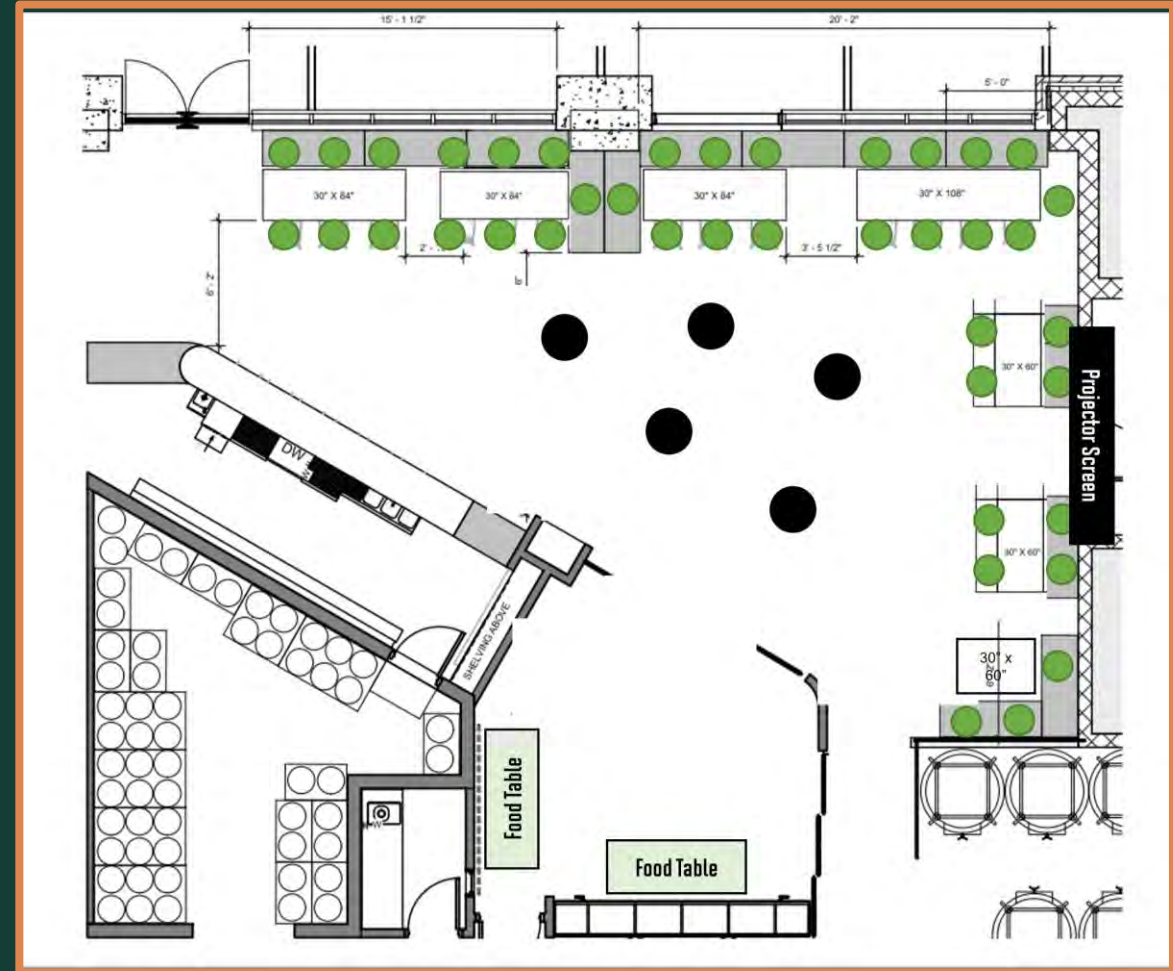




# FULL TAPROOM RECEPTION



Total capacity: 100 people, Approx. 40 person seated  
High-top tables in the center  
Semi-Private Room used for food set-up and/or merchandise





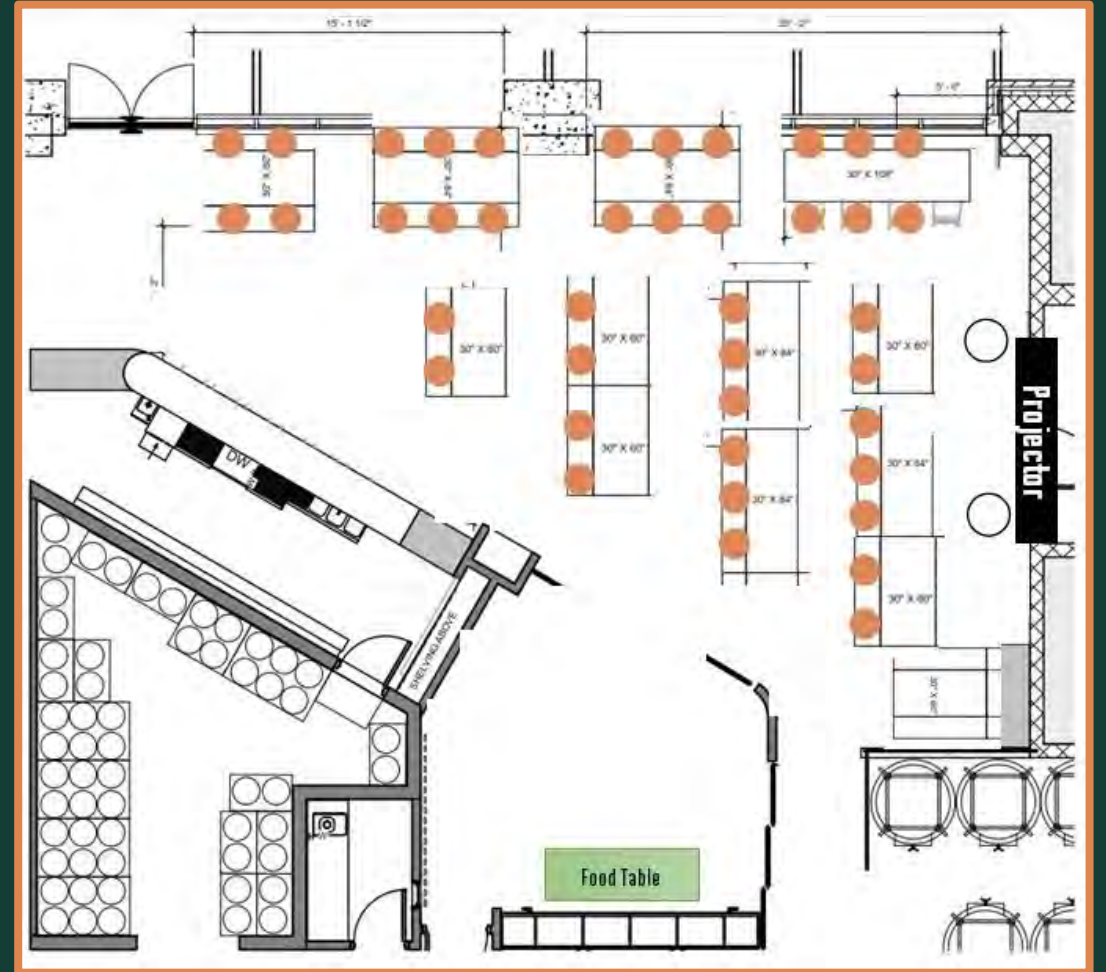






# FULL TAPROOM CLASSROOM

Total capacity: Approx. 40 person seated  
Semi-Private Room used for Food set-up and/or merchandise







# SEMI PRIVATE ROOM

237 Sq. Ft.  
Sliding doors can close off room.  
16 seated, 20 reception  
55" TV with HDMI connection

Perfect for small group meetings, tastings, focus groups!





## BEVERAGES

---

In addition to our craft beer made on site, we offer wine, margaritas, alcoholic cider (gluten-free), and non-alcoholic sodas.

We offer beverage packages or a prepaid bar minimum.

TABC Certified staffing is included in venue rental.

We are unable to serve spirits. Per TABC regulations, outside alcoholic beverages are not allowed to be brought in.





# BEVERAGE PACKAGES

## ALCOHOLIC

*\$25/person for 3 hrs, \$30/person for 4 hrs*

### Central District Craft Beer

Light, IPA, Sour, Seasonal

Texas Keeper Cider

### Boxt Luxury Wine (Napa, CA)

White, Rose, Red

### Cocktails

Margarita, Ranch Water, Mojito

Package includes non-alcoholic options.

\*50 person minimum for evening event rental

## NON-ALCOHOLIC

*\$5/ person*

Coke, Diet Coke, Sprite

Mexican Coke

Topo Chico

High Brew Cold Brew

### Zero Proof Cocktails (+\$2 per person)

Spicy Mango, Blackberry, Habanero Lime

\*25 person minimum for daytime event rental

## COFFEE AND TEA

*\$3.5/ person*

Self Service Coffee & Tea  
for daytime meetings

Creamer  
Sugar

\*25 person minimum for daytime event rental

Complimentary filtered water station is on site for all events.





## CATERING

---

Outside food and catering is welcome. A Food Service Fee is charged for outside catering. The fee can be waived with onsite catering staffing by your food vendor.



# PARKING

---

We are located on the ground retail floor of a City of Austin public parking garage (601 East 5th St.). Metered parking is available on nearby streets and we are one block from the Downtown Capital Metro station.







## BRANDING OPPORTUNITIES

Large street facing windows provide canvas for vinyl and other high traffic activation opportunities. (Vinyl must be installed and removed within rental period.)



# FURNITURE & EQUIPMENT

All furniture is movable and can be configured to fit the needs of your event. Furniture included in venue rental :

- 13 Wooden Tables
- 5 High Top Tables (30" round)
- Projector & Screen with HDMI connection (in Main Area)
- 55" TV with HDMI Connection (in Semi-Private Room)
- Handheld Microphone







## BOOKING INFORMATION

**Total Rental Fee is made up of Venue Rental Fee and Beverage Minimum.**

- **A signed contract and 50% deposit are required to secure a date. The venue rental balance is due 10 days prior to the event.**
- **Texas Sales Tax of 8.25% is applied to both the venue rental and beverages.**
- **A 20% service fee is applied to beverage minimum or total beverages consumed. This amount goes directly towards Central District staff.**

**Questions? Get in touch! For more information, please email us at [events@centraldistrictbrewing.com](mailto:events@centraldistrictbrewing.com).**

---





### TECH SPECS:

WI-FI Internet

2x Mackie450 SRM Speakers

2x Shure Handheld Microphones (3-pin XLR)

Epson Projector

Screen

55" Insignia TV on stand or stand

CAT 6 network cable into switch



### WINDOW MEASUREMENTS:

Window 1-4: 34.75" W x 85.75" H

Window 5: 33.375" W x 103.5" H

Window 6: 35.375 W x 103.5" H

Windows 7-11: 33.25" W x 75.0" H

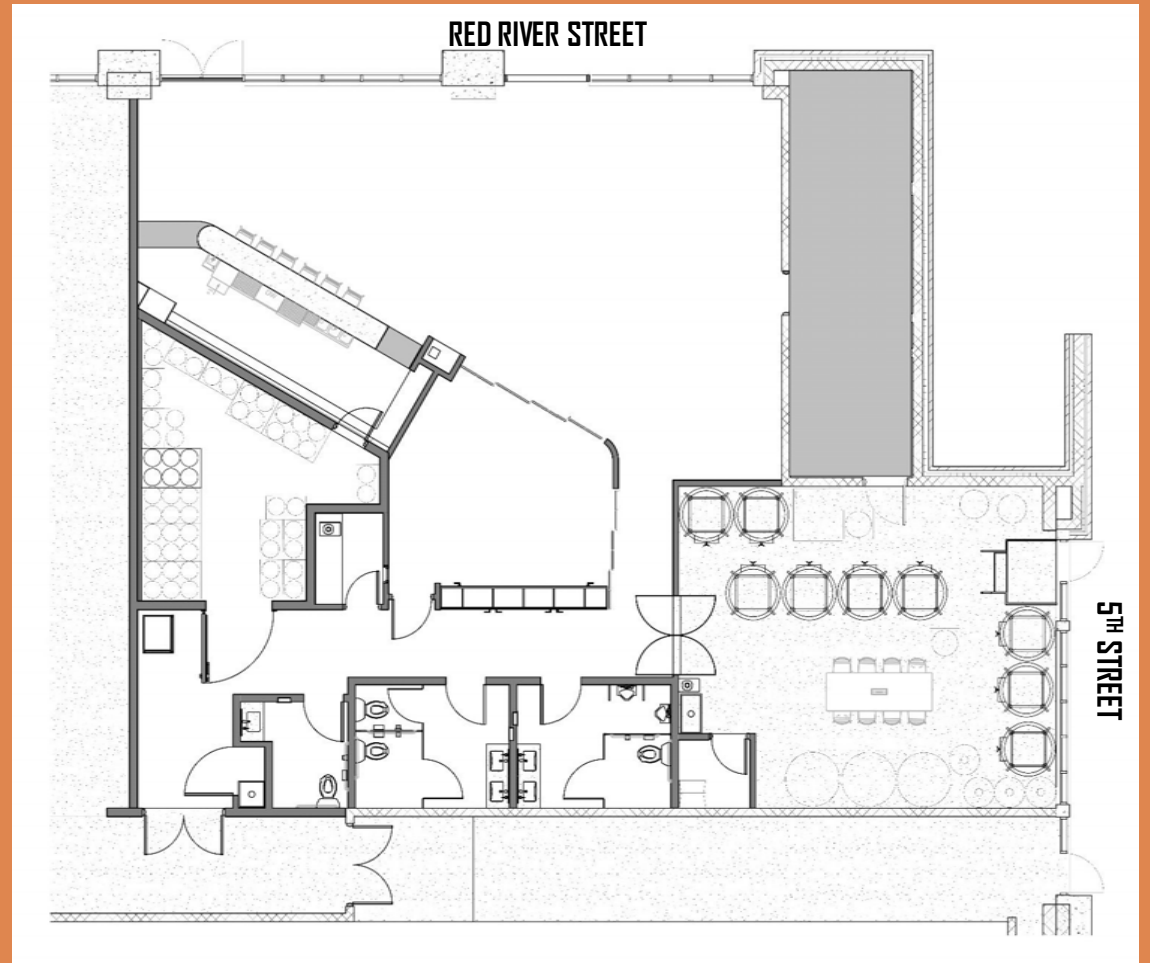
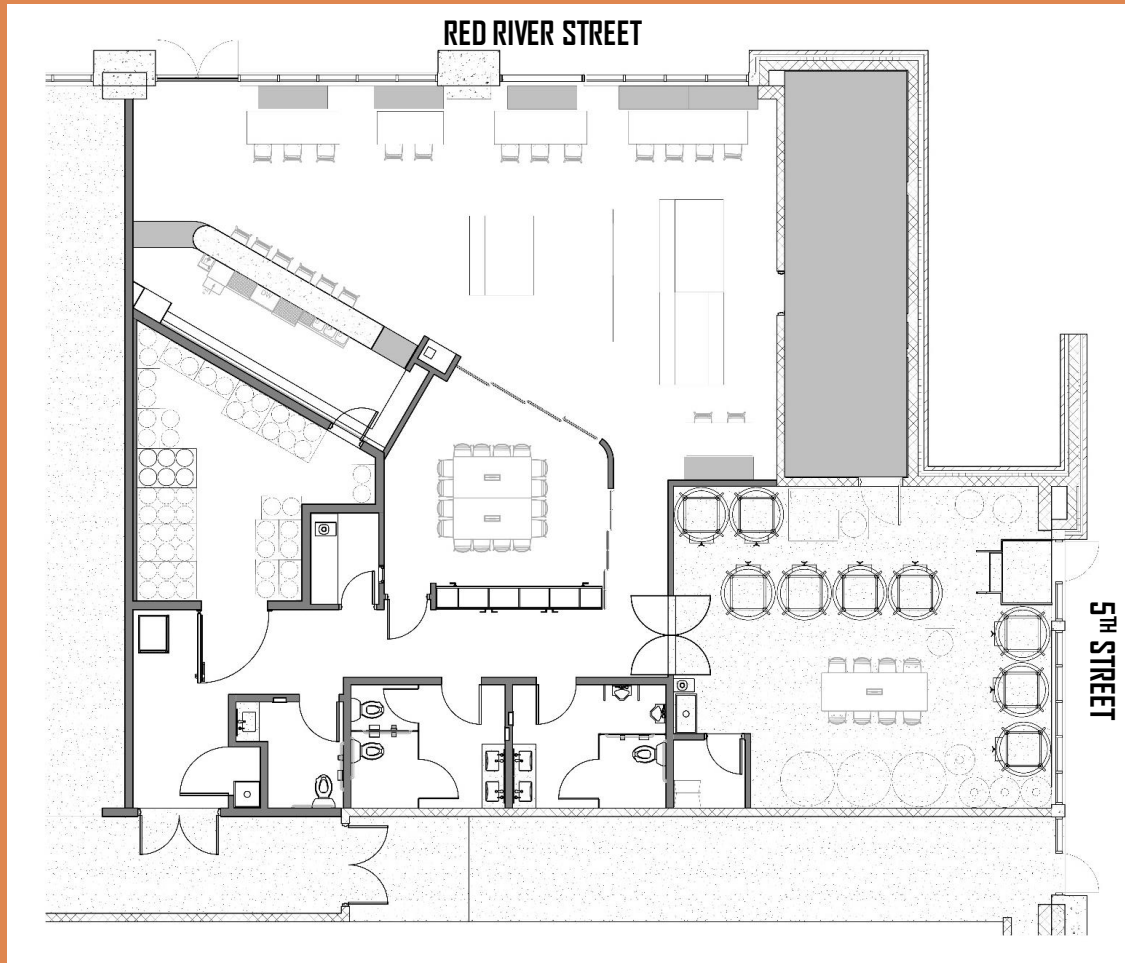
Top Panels on Windows 7-11: 33.25" W x 16.0" H

Vinyl install and removal must be within venue rental hours.



# FLOOR PLAN WITH FURNITURE

# FLOOR PLAN WITHOUT FURNITURE







# Catering and Food Recommendations

## FULL SERVICE & DROP CATERING

Pascal's Catering

Root Cellar

Hank's Catering

The Peached Tortilla

## TACOS

Torchy's Tacos

Taco Deli (lunch)

## BBQ

Terry Black's Barbecue\*

Franklin BBQ\* (lunch)

la Barbecue\*

Poke E Joes

Slab BBQ

Green Mesquite BBQ

\* Pick up only

## Pizza

Via 313

Hoboken Pie

Ropollo's Pizza Truck

## TEX MEX

Maudie's Tex Mex

Chuy's

Lupe Tortilla

## BAKED GOODS AND SWEETS

Haley's Cakes and Cookies

Amy's Ice Cream

Batch Craft Kolaches

Swedish Hill

Voodoo Donuts





# Vendor Recommendations

## RENTALS/PRODUCTION

Premiere Events

Party at the Moontower

## MUSIC

Texas Professional DJ

Austin's Harpist

## A/U EQUIPMENT

Freeman AU

TSU Sound and Vision

ATX Event Systems

## EVENT INSURANCE

[www.TheEventHelper.com](http://www.TheEventHelper.com)

## CASINO EVENTS

Pocket 4's