



CENTRAL DISTRICT BREWING

**417 Red River Street
Austin, TX 78701**



CENTRAL DISTRICT BREWING

Central District Brewing provides a fresh, fun, and unique atmosphere for any SXSW event. We are located in the heart of downtown, one block from the Austin Convention Center. The prime location is the perfect spot for brand activations, product showcases, corporate receptions, and networking parties. Our design incorporates post-industrial modern elements, with copper accents and soft greenery. The perfect place for your SXSW event!



VENUE FEATURES



TOTAL SPACE: 2525 Sq. Ft

Entertaining Area: 1359 Sq. Ft.

Catering Prep & Storage: 585 Sq. Ft.

Restroom Corridor: 581 Sq. Ft.



CAPACITY

Reception: 100 people on flow

Seated: 60 people



ACTUAL REACH OF PAST EVENTS

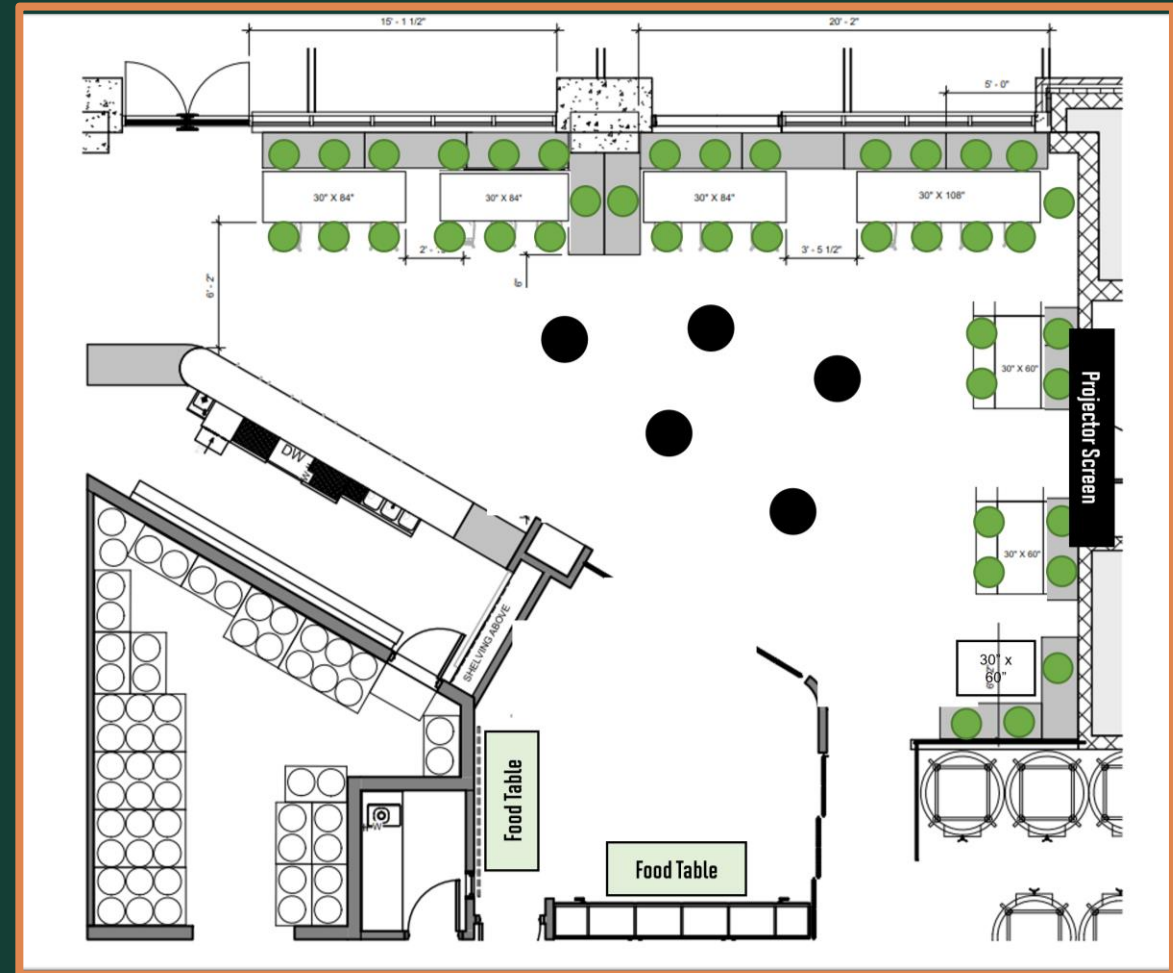
250+ check ins



FULL TAPROOM RECEPTION



Total capacity: 100 people, Approx. 40 person seated
High-top tables in the center
Semi-Private Room used for food set-up and/or merchandise

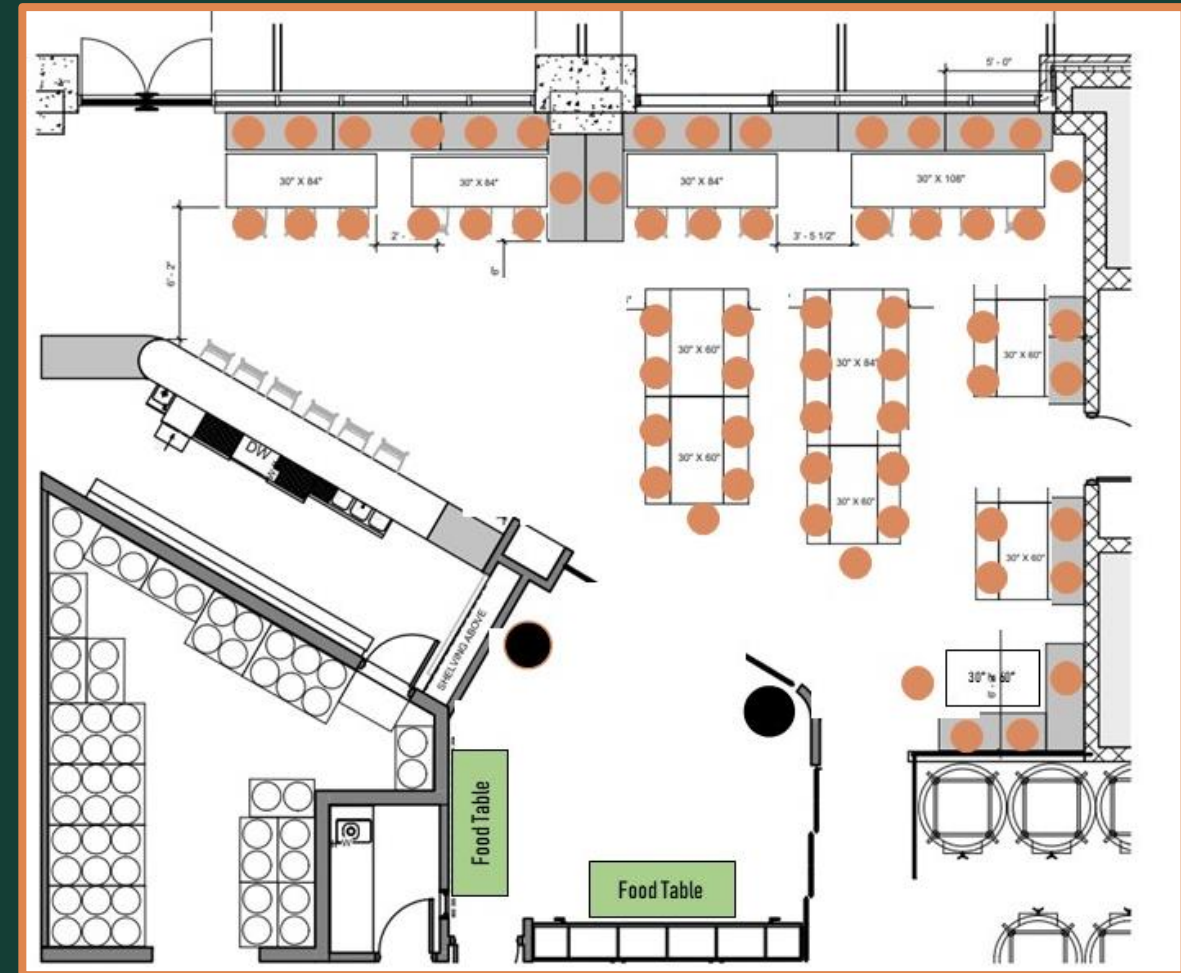




FULL TAPROOM SEATED



Total capacity: Approx. 60 people seated
Semi-Private Room used for food set-up and/or merchandise





SEMI PRIVATE ROOM

237 Sq. Ft.
Sliding doors can close off room.
55" TV with HDMI connection

A perfect space for food set-up,
merchandise display, or a breakout
room.





BRANDING OPPORTUNITIES

Large street facing windows provide canvas for vinyl and other high traffic activation opportunities. (Vinyl must be installed and removed within rental period.)



BEVERAGES

In addition to our craft beer made on site, we offer wine, margaritas, alcoholic cider (gluten-free), mocktails, and non-alcoholic sodas. We are unable to serve spirits.

TABC Certified staffing is included in venue rental.



CATERING

Outside food and catering is welcome. We do not have a kitchen on-site. Catering teams have the option to set up in our brewhouse area.



FURNITURE & EQUIPMENT

All furniture is movable and can be configured to fit the needs of your event. Furniture included in venue rental :

- 13 Wooden Tables
- 5 High Top Tables (30" round)
- Projector & Screen with HDMI connection
- 55" TV with HDMI Connection
- Handheld Microphone

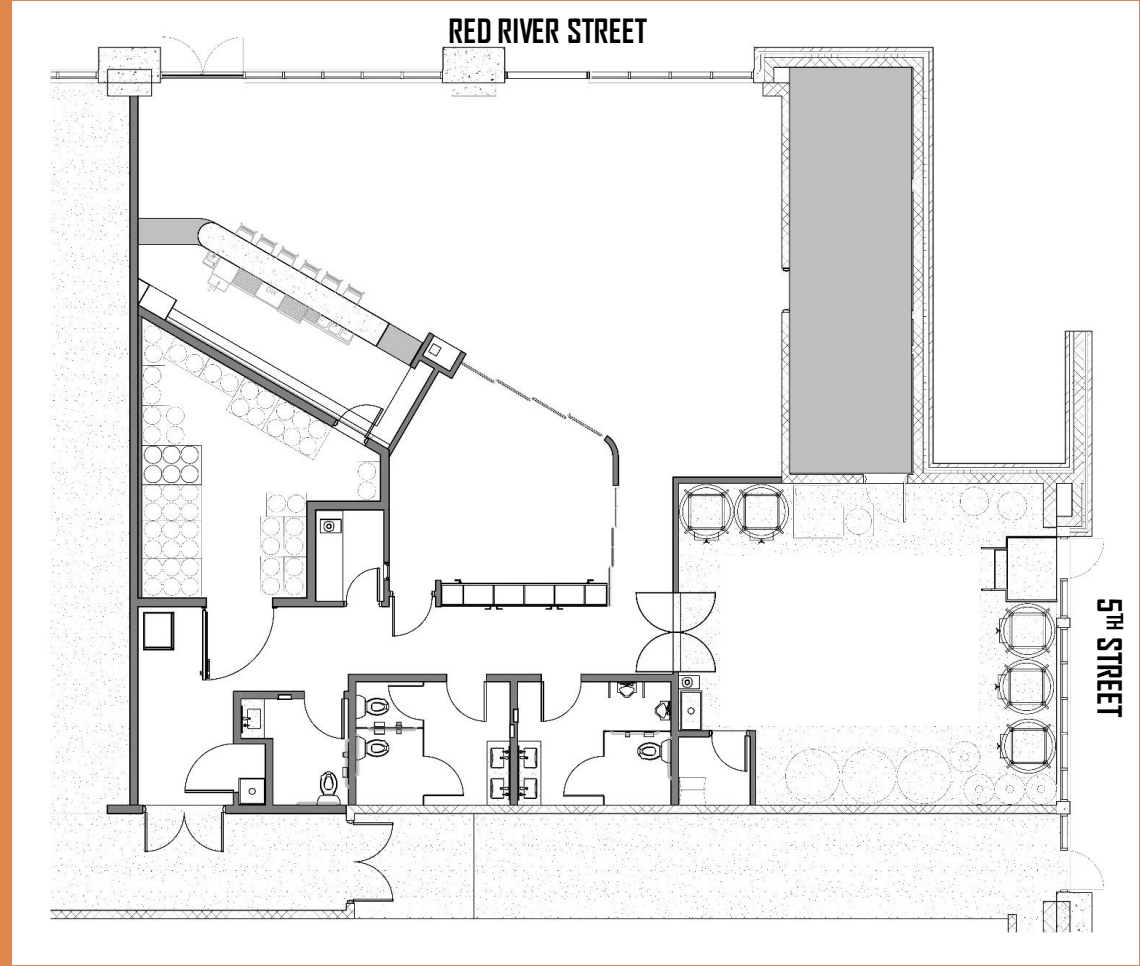
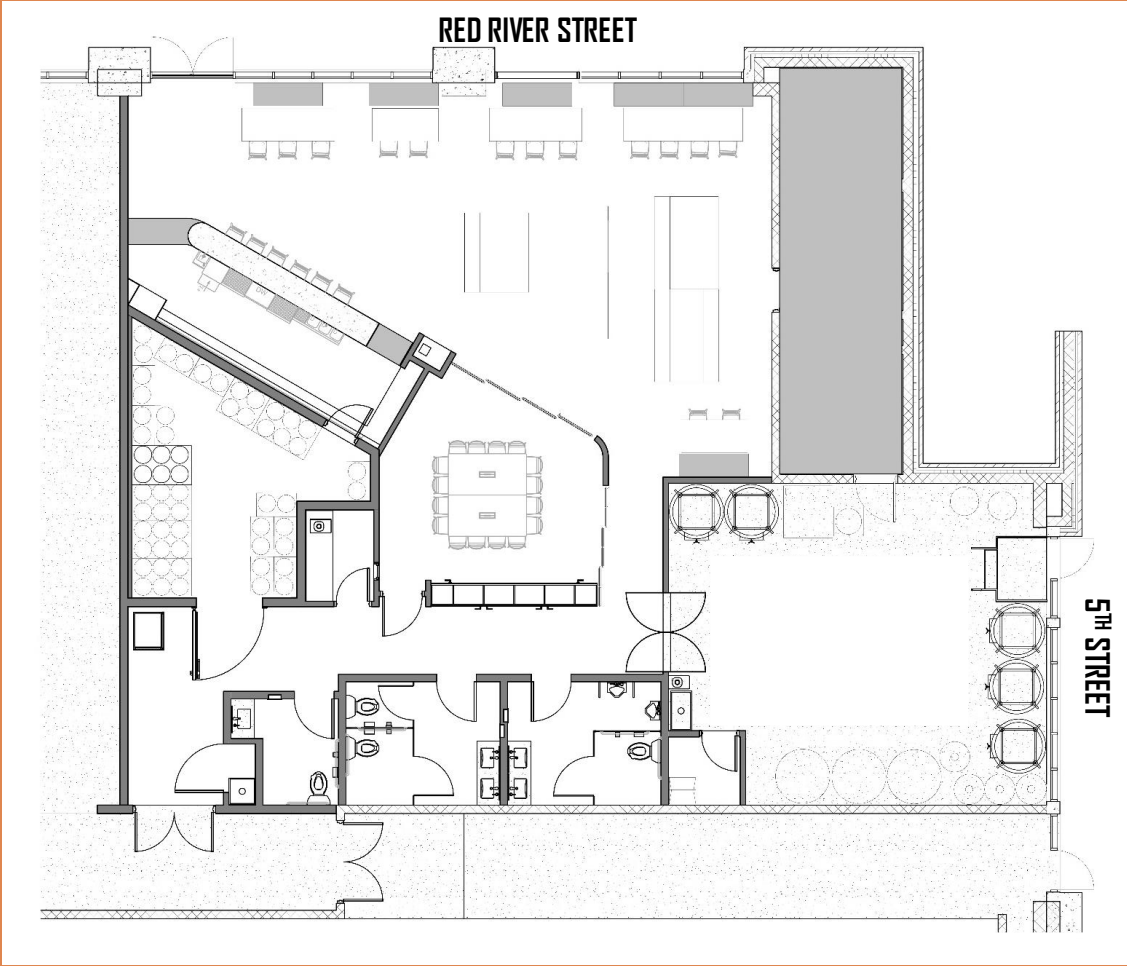
LOCATION

We are a quick one block (0.1 miles) from Entrance 5 of the Austin Convention Center, official hub of SXSW!



FLOOR PLAN WITH FURNITURE

FLOOR PLAN WITHOUT FURNITURE







BOOKING INFORMATION

Total Rental Fee is made up of Venue Rental Fee and Beverage Minimum.

- A signed contract and 50% deposit are required to secure a date. The deposit amount is applied to venue rental balance. The balance is due Feb 1, 2024.
- Texas Sales Tax of 8.25% is applied to both the venue rental and beverages.
- A 22% service fee is applied to beverage minimum or total beverages consumed. This amount goes directly towards Central District staff.
- Refundable Security Deposit: \$ 1,000. Deposit will be refunded if space is undamaged.
- Event Insurance required through a Certificate of Insurance or www.theeventhelper.com.

We would love to hear more about your event. [Get in touch here!](#)

Questions? Need more info? See our [SXSW Specs and FAQ](#) for more details!



Catering and Food Recommendations

FULL SERVICE & DROP CATERING

Hank's Catering

Root Cellar

Cultured ATX

Vestal's Catering

The Peached Tortilla

TACOS

Torchy's Tacos

Taco Deli (lunch)

BBQ

Terry Black's Barbecue*

Franklin BBQ* (lunch)

la Barbecue*

Poke E Joes

Slab BBQ

Green Mesquite BBQ

* Pick up only

Pizza

Via 313

Hoboken Pie

Ropollo's Pizza

TEX MEX

Maudie's Tex Mex

Chuy's

Lupe Tortilla

BAKED GOODS AND SWEETS

Haley's Cakes and Cookies

Amy's Ice Cream

Batch Craft Kolaches

Swedish Hill

Voodoo Donuts



Vendor Recommendations

RENTALS/PRODUCTION

Premiere Events

Party at the Moontower

MUSIC

Texas Professional DJ

Austin's Harpist

A/V EQUIPMENT

Freeman AV

TSU Sound and Vision

ATX Event Systems

EVENT INSURANCE

www.TheEventHelper.com

FLORAL

Posey Floral and Event Design