



**CENTRAL DISTRICT BREWING**

**417 Red River Street  
Austin, TX 78701**





# CENTRAL DISTRICT BREWING

---

Central District Brewing provides a fresh, fun, and unique atmosphere for any SXSW event. We are located in the heart of downtown, one block from the Austin Convention Center. The prime location is the perfect spot for brand activations, product showcases, corporate receptions, and networking parties. Our design incorporates post-industrial modern elements, with copper accents and soft greenery. The perfect place for your SXSW event!





## VENUE FEATURES



**TOTAL SPACE: 2525 Sq. Ft**

Entertaining Area: 1359 Sq. Ft.

Catering Prep & Storage: 585 Sq. Ft.

Restroom Corridor: 581 Sq. Ft.



## CAPACITY

Reception: 100 people on flow

Seated: 60 people



## ACTUAL REACH OF PAST EVENTS

250+ check ins

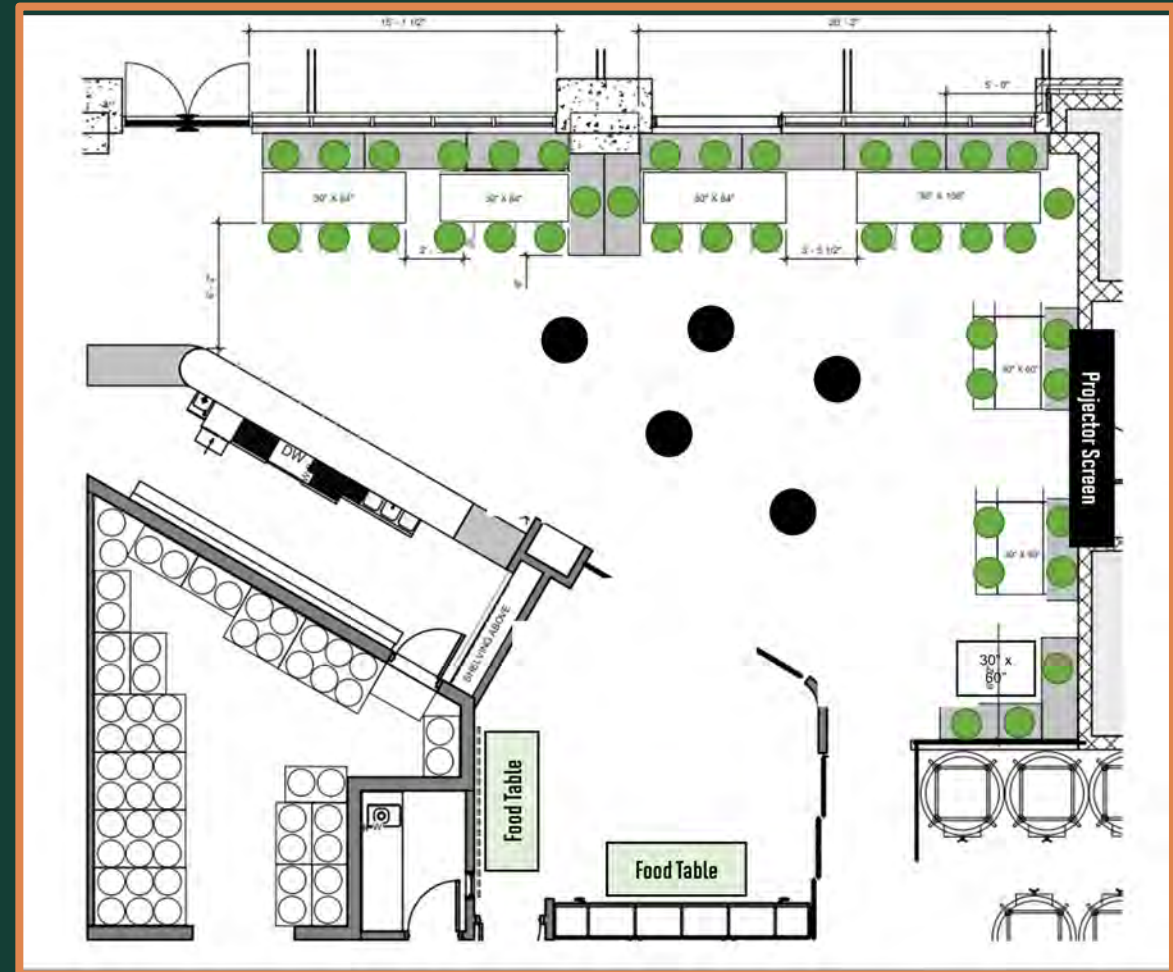




# FULL TAPROOM RECEPTION



Total capacity: 100 people, Approx. 40 person seated  
High-top tables in the center  
Semi-Private Room used for food set-up and/or merchandise



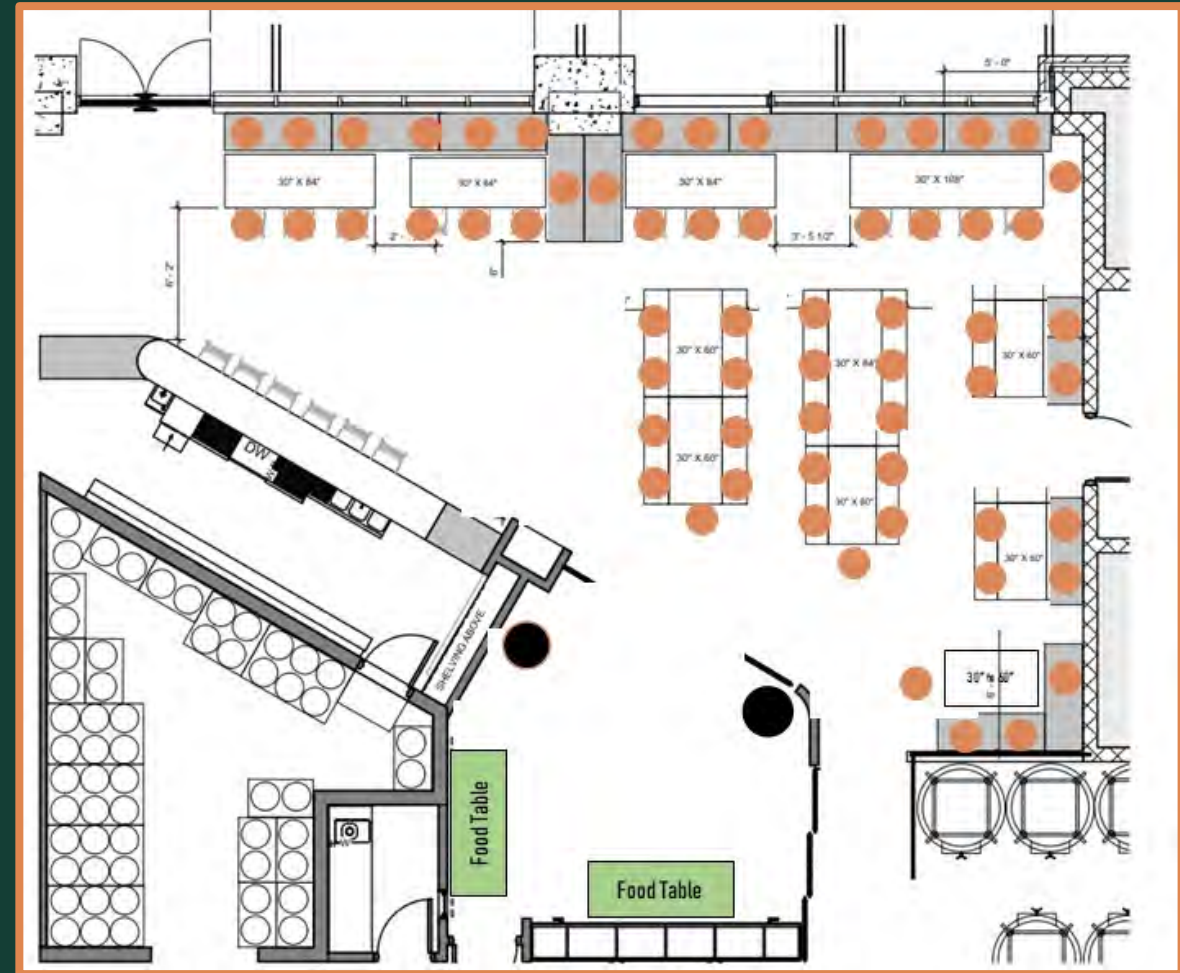




# FULL TAPROOM SEATED



Total capacity: Approx. 60 people seated  
Semi-Private Room used for food set-up and/or merchandise







## SEMI PRIVATE ROOM

---

237 Sq. Ft.  
Sliding doors can close off room.  
55" TV with HDMI connection

A perfect space for food set-up,  
merchandise display, or a breakout  
room.







## BRANDING OPPORTUNITIES

Large street facing windows provide canvas for vinyl and other high traffic activation opportunities. (Vinyl must be installed and removed within rental period.)





## BEVERAGES

---

In addition to our craft beer made on site, we offer wine, margaritas, alcoholic cider (gluten-free), mocktails, and non-alcoholic sodas. We are unable to serve spirits.

TABC Certified staffing is included in venue rental.



## CATERING

---

Outside food and catering is welcome. We do not have a kitchen on-site. Catering teams have the option to set up in our brewhouse area.



## FURNITURE & EQUIPMENT

---

All furniture is movable and can be configured to fit the needs of your event. Furniture included in venue rental :

- 13 Wooden Tables
- 5 High Top Tables (30" round)
- Projector & Screen with HDMI connection
- 55" TV with HDMI Connection
- Handheld Microphone



## LOCATION

---

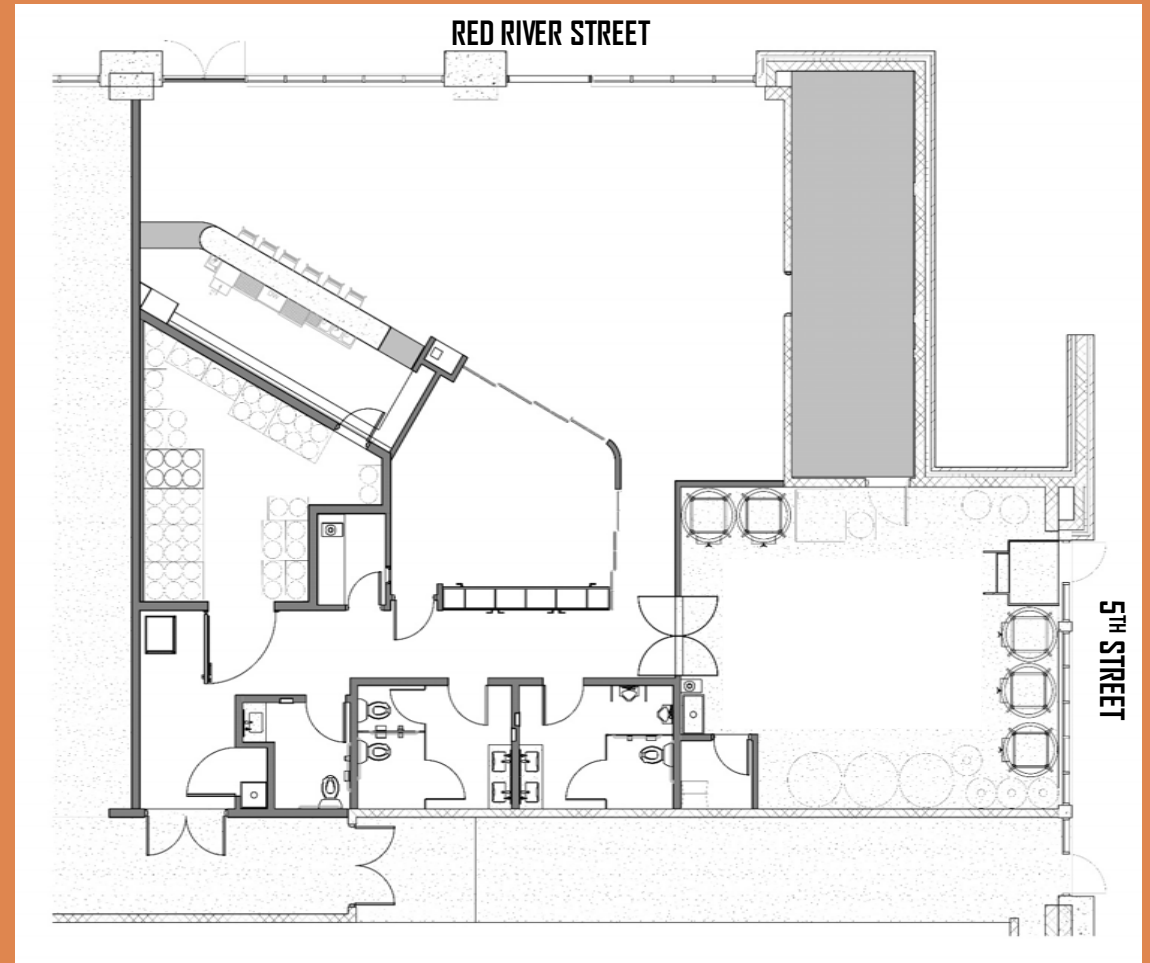
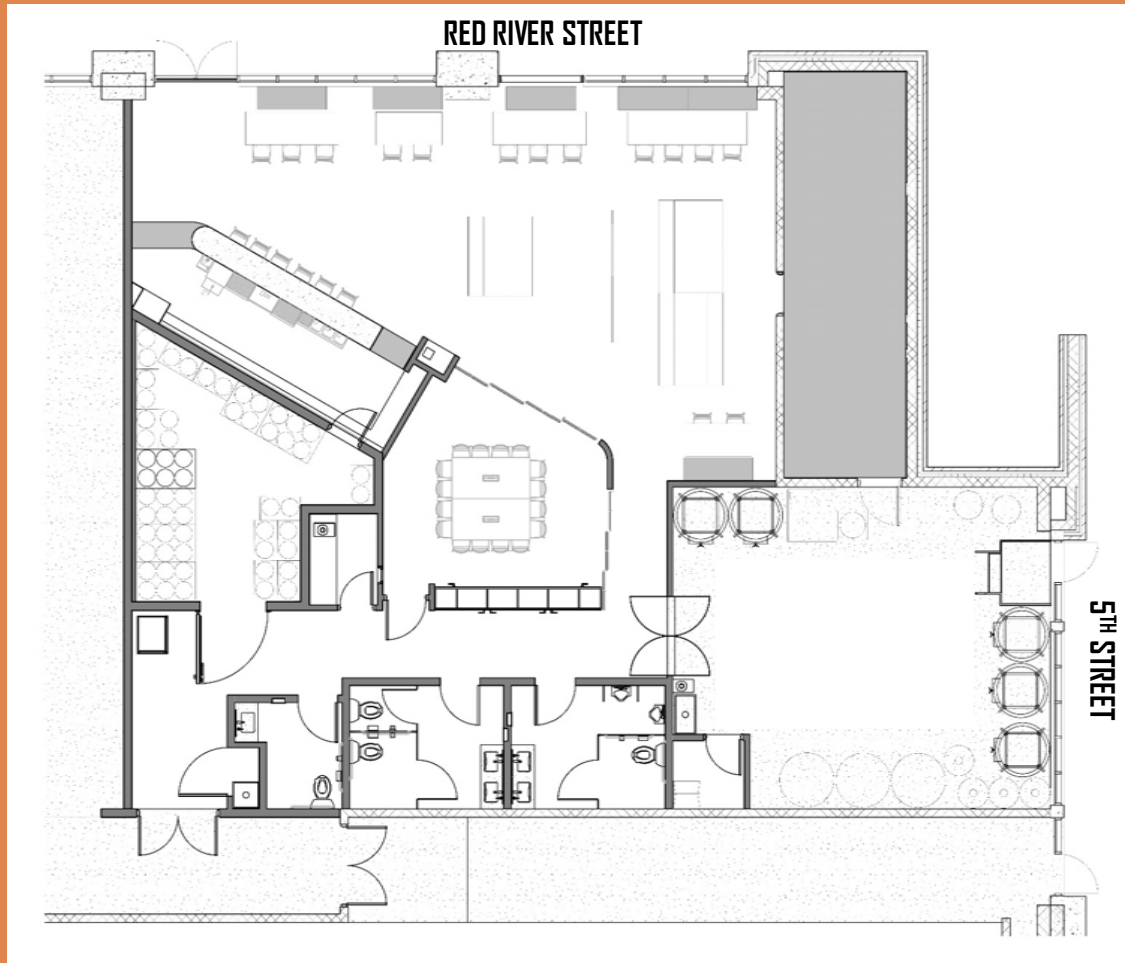
We are a quick one block (0.1 miles) from Entrance 5 of the Austin Convention Center, official hub of SXSW!





**FLOOR PLAN  
WITH FURNITURE**

**FLOOR PLAN  
WITHOUT FURNITURE**











## BOOKING INFORMATION

**Total Rental Fee is made up of Venue Rental Fee and Beverage Minimum.**

- A signed contract and 50% deposit are required to secure a date. The deposit amount is applied to venue rental balance. The balance is due Feb 1, 2025.
- Texas Sales Tax of 8.25% is applied to both the venue rental and beverages.
- A 22% service fee is applied to beverage minimum or total beverages consumed. This amount goes directly towards Central District staff.
- Refundable Security Deposit: \$ 1,000. Deposit will be refunded if space is undamaged.
- Event Insurance required through a Certificate of Insurance or [www.theeventhelper.com](http://www.theeventhelper.com).

We would love to hear more about your event. [Get in touch here!](#)

Questions? Need more info? See our [SXSW Specs and FAQ](#) for more details!

---





# Catering and Food Recommendations

## FULL SERVICE & DROP CATERING

Hank's Catering

Root Cellar

Cultured ATX

Vestal's Catering

The Peached Tortilla

## TACOS

Torchy's Tacos

Taco Deli (lunch)

## BBQ

Terry Black's Barbecue\*

Franklin BBQ\* (lunch)

la Barbecue\*

Poke E Joes

Slab BBQ

Green Mesquite BBQ

\* Pick up only

## Pizza

Via 313

Hoboken Pie

Ropollo's Pizza

## TEX MEX

Maudie's Tex Mex

Chuy's

Lupe Tortilla

## BAKED GOODS AND SWEETS

Haley's Cakes and Cookies

Amy's Ice Cream

Batch Craft Kolaches

Swedish Hill

Voodoo Donuts





# Vendor Recommendations

## RENTALS/PRODUCTION

Premiere Events

Party at the Moontower

## MUSIC

Texas Professional DJ

Austin's Harpist

## A/V EQUIPMENT

Freeman AV

TSU Sound and Vision

ATX Event Systems

## EVENT INSURANCE

[www.TheEventHelper.com](http://www.TheEventHelper.com)

## FLORAL

Posey Floral and Event Design



